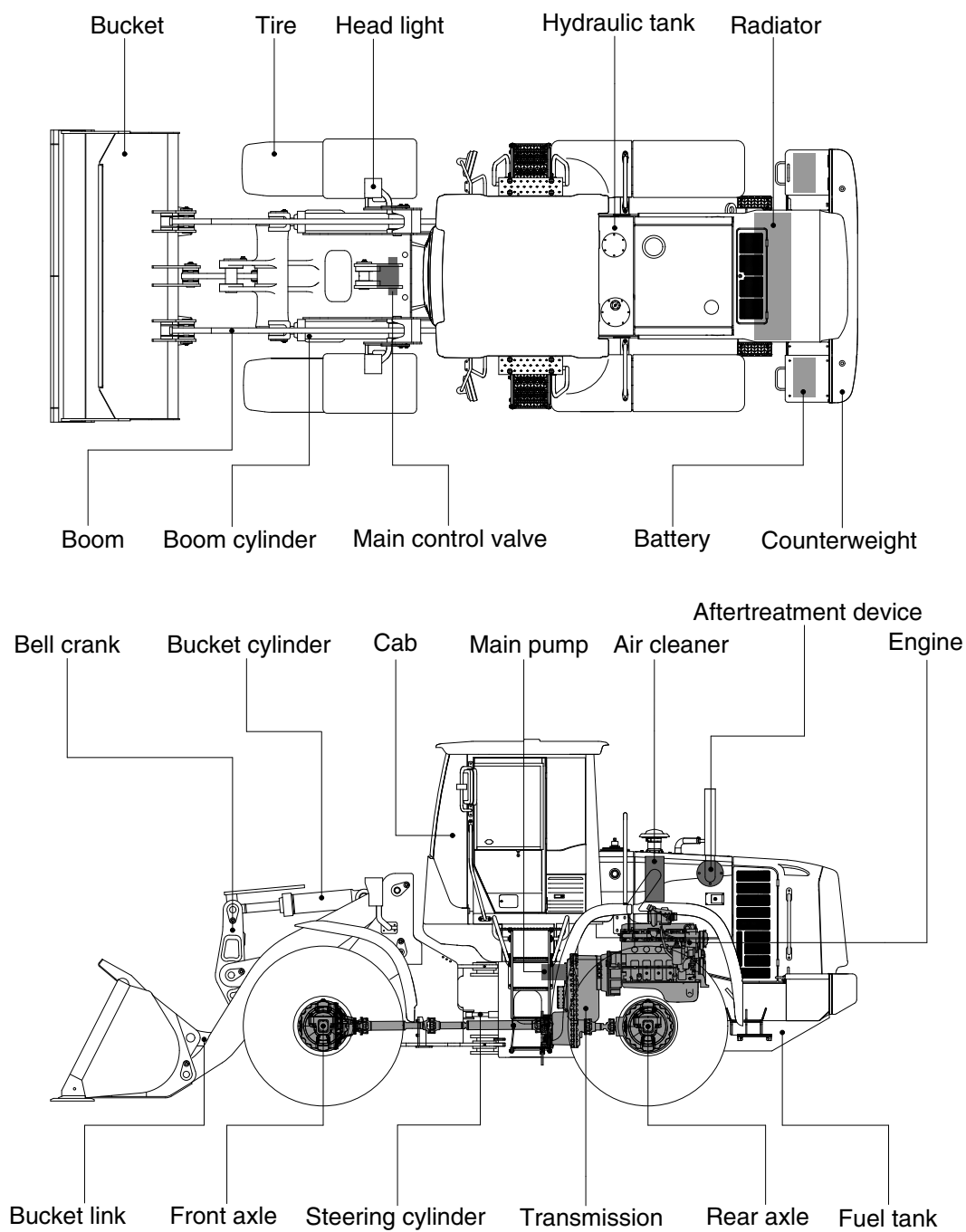


2. SPECIFICATIONS

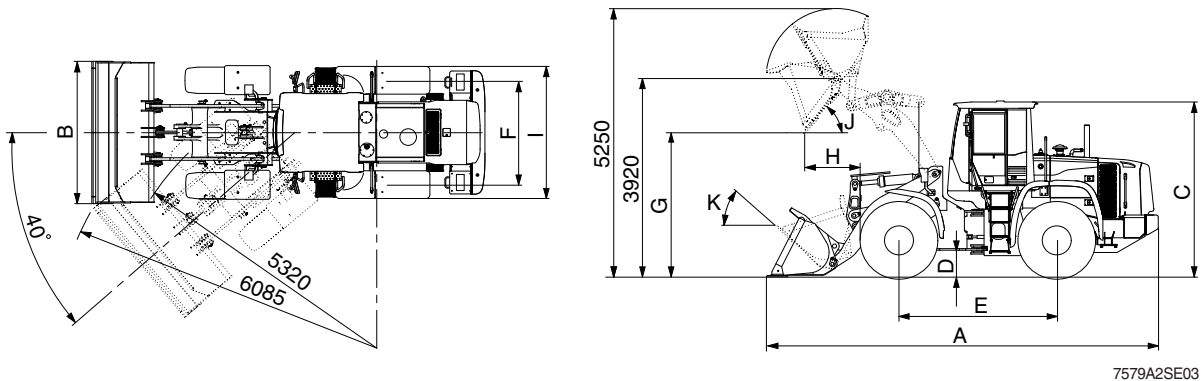
1. MAJOR COMPONENTS



7609A2SE01

2. SPECIFICATIONS

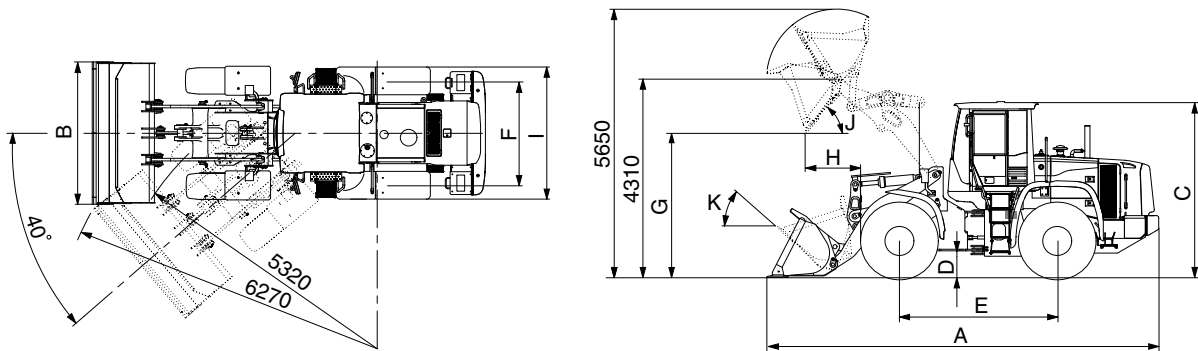
1) WITH BOLT-ON CUTTING EDGE TYPE BUCKET (HL757-9A)



7579A2SE03

Description			Unit	Specification
Operating weight			kg (lb)	14700 (32400)
Bucket capacity	Struck		m³ (yd³)	2.4 (3.1)
	Heaped			2.8 (3.7)
Overall length	A		mm (ft-in)	7580 (24' 10")
Overall width	B			2740 (9' 0")
Overall height	C			3310 (10' 10")
Ground clearance	D			410 (1' 4")
Wheelbase	E			3050 (10' 0")
Tread	F			2050(6' 9")
Dump clearance at 45°	G			2840 (9' 4")
Dump reach (full lift)	H			1070 (3' 6")
Width over tires	I			2580 (8' 6")
Dump angle	J			degree (°)
Roll back angle (carry position)	K		48	
Cycle time	Lift (with load)		sec	5.9
	Dump (with load)			1.1
	Lower (empty)			3.8
Maximum travel speed			km/hr (mph)	38.5 (24.0)
Braking distance			m (ft-in)	12 (39' 4")
Minimum turning radius (center of outside tire)				5.32 (17' 5")
Gradeability			degree (°)	30
Breakout force			kg (lb)	12530 (27620)
Travel speed	Forward	First gear	km/hr (mph)	6.9 (4.3)
		Second gear		11.4 (7.1)
		Third gear		23.0 (14.3)
		Fourth gear		38.5 (24.0)
	Reverse	First gear		7.3 (4.5)
		Second gear		12.0 (7.5)
		Third gear		24.3 (15.1)

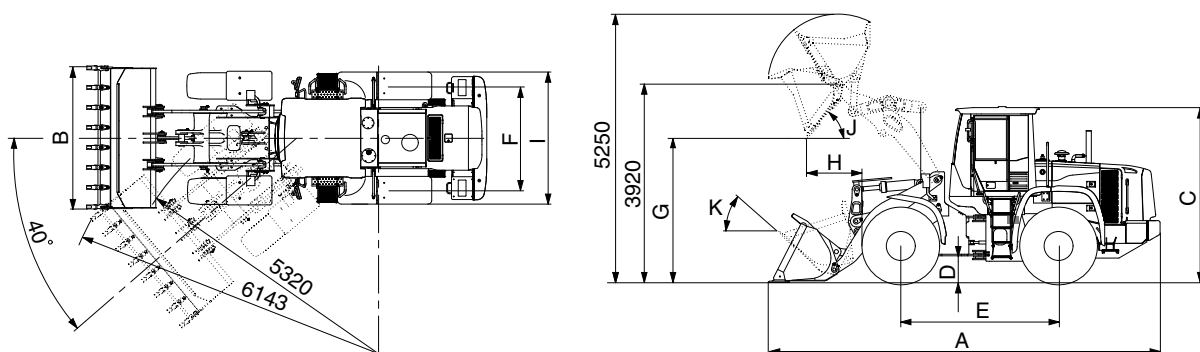
WITH BOLT-ON CUTTING EDGE TYPE BUCKET (HL757XTD-9A)



7579A2SE03-1

Description			Unit	Specification
Operating weight			kg (lb)	15200 (33500)
Bucket capacity	Struck		m³ (yd³)	2.4 (3.1)
	Heaped			2.8 (3.7)
Overall length	A		mm (ft-in)	7990 (26' 3")
Overall width	B			2740 (9' 0")
Overall height	C			3310 (10' 10")
Ground clearance	D			410 (1' 4")
Wheelbase	E			3050 (10' 0")
Tread	F			2050 (6' 9")
Dump clearance at 45°	G			3230 (10' 7")
Dump reach (full lift)	H			1100 (3' 7")
Width over tires	I			2580 (8' 6")
Dump angle	J			degree (°)
Roll back angle (carry position)	K		50	
Cycle time	Lift (with load)		sec	5.9
	Dump (with load)			1.1
	Lower (empty)			3.8
Maximum travel speed			km/hr (mph)	38.5 (24.0)
Braking distance			m (ft-in)	12 (39' 4")
Minimum turning radius (center of outside tire)				5.32 (17' 5")
Gradeability			degree (°)	30
Breakout force			kg (lb)	12420 (27380)
Travel speed	Forward	First gear	km/hr (mph)	6.9 (4.3)
		Second gear		11.4 (7.1)
		Third gear		23.0 (14.3)
		Fourth gear		38.5 (24.0)
	Reverse	First gear		7.3 (4.5)
		Second gear		12.0 (7.5)
		Third gear		24.3 (15.1)

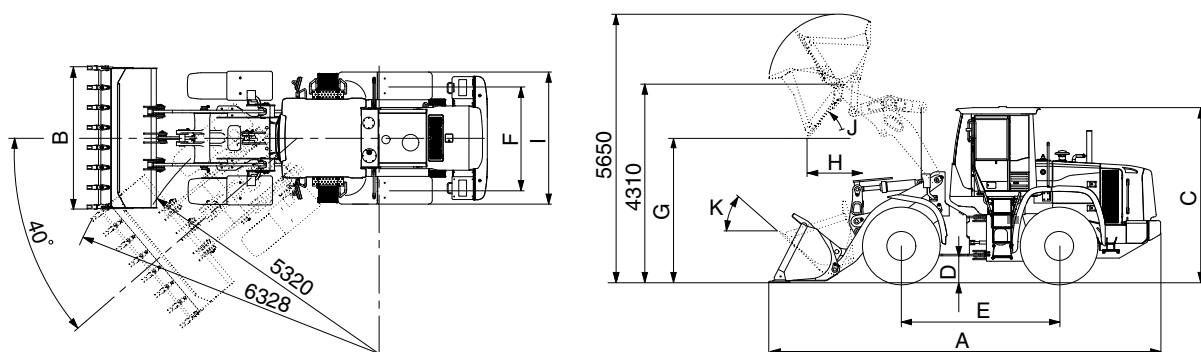
2) WITH TOOTH TYPE BUCKET (HL757-9A)



7579A2SE02

Description			Unit	Specification
Operating weight			kg (lb)	14600 (32190)
Bucket capacity	Struck		m³ (yd³)	2.2 (2.9)
	Heaped			2.6 (3.4)
Overall length	A		mm (ft-in)	7680 (25' 2")
Overall width	B			2790 (9' 2")
Overall height	C			3310 (10' 10")
Ground clearance	D			410 (1' 4")
Wheelbase	E			3050 (10' 0")
Tread	F			2050 (6' 9")
Dump clearance at 45°	G			2750 (9' 1")
Dump reach (full lift)	H			1150 (3' 9")
Width over tires	I			2580 (8' 6")
Dump angle	J		degree (°)	47
Roll back angle (carry position)	K			48
Cycle time	Lift (with load)		sec	5.9
	Dump (with load)			1.1
	Lower (empty)			3.8
Maximum travel speed			km/hr (mph)	38.5 (24.0)
Braking distance			m (ft-in)	12 (39' 4")
Minimum turning radius (center of outside tire)				5.32 (17' 5")
Gradeability			degree (°)	30
Breakout force			kg (lb)	12530 (27620)
Travel speed	Forward	First gear	km/hr (mph)	6.9 (4.3)
		Second gear		11.4 (7.1)
		Third gear		23 (14.3)
		Fourth gear		38.5 (24.0)
	Reverse	First gear		7.3 (4.5)
		Second gear		12.0 (7.5)
		Third gear		24.3 (15.1)

WITH TOOTH TYPE BUCKET (HL757XTD-9A)



7579A2SE02-1

Description			Unit	Specification
Operating weight			kg (lb)	15100 (33290)
Bucket capacity	Struck		m³ (yd³)	2.2 (2.9)
	Heaped			2.6 (3.4)
Overall length	A		mm (ft-in)	8100 (26' 7")
Overall width	B			2790 (9' 2")
Overall height	C			3310 (10' 10")
Ground clearance	D			410 (1' 4")
Wheelbase	E			3050 (10' 0")
Tread	F			2050 (6' 9")
Dump clearance at 45°	G			3145 (10' 4")
Dump reach (full lift)	H			1175 (3' 10")
Width over tires	I			2580 (8' 6")
Dump angle	J			degree (°)
Roll back angle (carry position)	K		50	
Cycle time	Lift (with load)		sec	5.9
	Dump (with load)			1.1
	Lower (empty)			3.8
Maximum travel speed			km/hr (mph)	38.5 (24.0)
Braking distance			m (ft-in)	12 (39' 4")
Minimum turning radius (center of outside tire)				5.32 (17' 5")
Gradeability			degree (°)	30
Breakout force			kg (lb)	12420 (27380)
Travel speed	Forward	First gear	km/hr (mph)	6.9 (4.3)
		Second gear		11.4 (7.1)
		Third gear		23.0 (14.3)
		Fourth gear		38.5 (24.0)
	Reverse	First gear		7.3 (4.5)
		Second gear		12.0 (7.5)
		Third gear		24.3 (15.1)

3. WEIGHT

Item		kg	lb
Front frame assembly		1210	2670
Rear frame assembly		1680	3700
Front fender (LH & RH)		26	57
Counterweight	HL757-9A	490	1080
	HL757XTD-9A	780	1720
Cab assembly		1125	2480
Engine assembly		580	1280
Transmission assembly		500	1100
Drive shaft (front)		18	40
Drive shaft (center)		17	37
Drive shaft (rear)		11	24
Front axle (include differential)		1000	2200
Rear axle (include differential)		780	1720
Tire (20.5-25, 16PR, L3)		203	448
Hydraulic tank assembly		210	460
Fuel tank assembly		345	760
Main pump assembly		55	121
Fan & brake pump assembly		15	33
Main control valve (2/3 spool)		34 / 41	75 / 90
Steering valve (EHPS)		10	22
Boom assembly	HL757-9A	965	2130
	HL757XTD-9A	1170	2580
Bell crank assembly		245	540
Bucket link		44	100
2.8 m³ bucket, with bolt on cutting edge		1190	2620
2.6 m³ bucket, with tooth		1100	2430
Boom cylinder assembly		100	220
Bucket cylinder assembly		115	255
Steering cylinder assembly		24	53
Seat		40	88
Battery		44	97

4. SPECIFICATION FOR MAJOR COMPONENTS

1) ENGINE

Item	Specification
Model	Cummins QSB6.7
Type	4-cycle turbocharged and charge air-cooled diesel engine
Control type	Electronic control
Cooling method	Water cooling
Number of cylinders and arrangement	6 cylinders, in-line
Firing order	1-5-3-6-2-4
Combustion chamber type	Direct injection type
Cylinder bore × stroke	107 × 124 mm (4.2" × 4.9")
Piston displacement	6730 cc (410cu in)
Compression ratio	17.3 : 1
Rated horse power (Gross)	200 hp at 2200 rpm
Maximum torque at 1400 rpm	94.7 kgf · m (685 lbf · ft)
Engine oil quantity	18 l (4.8 U.S. gal)
Wet weight	519 kg(1140 lb)
High idling speed	2230 ± 50 rpm
Low idling speed	800 ± 25 rpm
Rated fuel consumption	220 g/kW · hr
Starting motor	Denso PA90L (24V-7.8kW)
Alternator	Delco Remy 24SI (24V-70Amp)
Battery	2 × 12V × 130Ah

2) MAIN PUMP

Item	Specification
Type	Variable piston pump
Capacity	50+38 cc/rev
Maximum operating pressure	280 kgf/cm ² (3980 psi)
Rated oil quantity	185 l /min (48.8 U.S.gpm / 40.6 U.K.gpm)
Maximum speed	2230 rpm

3) FAN AND BRAKE PUMP

Item	Specification
Type	Variable piston pump
Capacity	28 cc/rev
Maximum operating pressure	250 kgf/cm ² (3560 psi)
Rated oil quantity	59 l /min (15.6 U.S.gpm)
Maximum speed	2230 rpm

4) MAIN CONTROL VALVE

Item	Specification
Type	2 spool
Operating method	Hydraulic pilot assist
System pressure	280 kgf/cm ² (3980 psi)
Overload relief valve pressure	340 kgf/cm ² (4840 psi) / *300 kgf/cm ² (4270 psi)

* : Bucket dump

5) REMOTE CONTROL VALVE

Item	Specification
Type	Pressure reducing type
Operating pressure	Minimum 6.5 kgf/cm ² (92.4 psi)
	Maximum 22 kgf/cm ² (312.9 psi)
Single operation stroke	Lever 80 mm (3.4 in)

6) CYLINDER

Item		Specification
Boom cylinder	Bore dia × Rod dia × Stroke	ø 120 × ø 70 × 785 mm
Bucket cylinder	Bore dia × Rod dia × Stroke	ø 140 × ø 75 × 485 mm
Steering cylinder	Bore dia × Rod dia × Stroke	ø 65 × ø 45 × 418 mm

7) DYNAMIC POWER TRANSMISSION DEVICES

Item			Specification
4-speed transmission (std)	Model		ZF 4WG 190
	Type	Converter	Single-stage, single-phase
		Transmission	Full-automatic power shift
	Gear shift		Forward fourth gear, reverse third gear
	Control		Electrical single lever type, kick-down system
	Travel speed		See the page 2-2.
5-speed transmission (opt)	Model		ZF 5WG210
	Type	Converter	Single-stage, double-phase (with lock up clutch)
		Transmission	Full-automatic power shift
	Gear shift		Forward fifth gear, reverse third gear
	Control		Electrical single lever type, kick-down system
	Travel speed	Forward 1/2/3/4/5	6.4/11.1/17.1/26.6/40.8 km/hr
		Reverse 1/2/3	6.7/11.7/28.0 km/hr
Axle	Drive devices		4-wheel drive
	Front		Front fixed location
	Rear		Oscillation ± 13° of center pin-loaded
Wheels	Tires		20.5-25, 16PR (L3)
Brakes	Travel		Four-wheel, wet-disc type, full hydraulic
	Parking		Spring applied, hydraulic released brake on transmission
Steering	Type		Full hydraulic, articulated
	Steering angle		40° to both right and left angle, respectively
	Relief pressure		235 kgf/cm ² (3340 psi)